

Check all dimensions and site conditions prior to commencement of any work, the purchase or ordering of any materials, fittings, plant, services or equipment and the preparation of shop drawings and or the fabrication of any components.

Do not scale drawings - refer to figured dimensions only. Any discrepancies shall immediately be referred to the architect for clarification.

All drawings may not be reproduced or distributed without prior permission from the architect.

Legend - Fitout Plan

- XX-XXX Refer to A40.111 for Master Schedule code references
- Door Code #
- RT-01 Joinery Reference Code #
- A16.001

GENERAL NOTES

- Refer to master schedule for detail on Finishes & FF&E tags
- Dimensions given are indicative only. Refer to detail plans for more precise dimensions
- Refer to A.05 Series plans for wall setbacks and wall type tags
- Refer to A.30 Series for door types (read in conjunction with Architectural schedules and drawings)
- Drawings show design intent coordinate with all relevant consultants to confirm details and specification of design.
- Joinery types are indicated with tags and drawing reference
- Wall Finishes - All interior apartment walls generally to be painted PA-102, unless otherwise noted.

Legend - Reflected Ceiling Plans

- CL- Refer to A40.## for Master Schedule code reference descriptions
- Ceiling @ 2400 AFFL
- Ceiling @ 2700 AFFL
- Moisture resistant ceiling
- XXXX AFFL Height of ceiling above finished floor level.
- AP Denotes access panels. Refer to Mechanical documentation for location & associated branch provider unit access panel.
- LRG Denotes location of flangeless linear air grille.
- LT-101 Feature Pendant, option only. To be replaced with LT-102 unless purchaser upgrades req.
- LT-102 Recessed Downlight
- LT-103 Recessed Adjustable Downlight
- LT-201 Balcony wall light

NOTE:

- Refer to A40.111 for Master Schedule code reference descriptions.
- Refer to A05 Series of Wall Types & Setout Plans drawings for dimension wall setout & Detail Wall Types
- Refer to Electrical Documentation for lighting details.
- Refer to Fire Documentation for sprinkler details
- All wall mounted fittings at FFL +1800 unless otherwise noted.
- Allow for continuous framing to support window furnishing brackets

REFER TO CONSULTANT'S SPECIFICATION FOR SERVICES.

Legend - Electrical Plans

- 1 GPO TV MATV Outlet
- 2 DGPO Pay TV & MATV Outlet
- External DGPO Dual Phone & Data Outlet
- WP 2 Microwave GPO 2 Light Switch
- MW Fridge GPO Intercom
- FR Dishwasher GPO Fresh air control switch
- DW FIA A/C switch
- A/C

Notes:
 - Drawings to be read in conjunction with Electrical Engineers documentation
 - Refer to Electrical Engineers Documentation for Light Spec.

NOTE: VERA LIVING

- Emergency power solutions shall be provided to cater for a min 2-hour outage in no less than 2 double GPOs in participant bedrooms and any provided automated doors that are used for entry or egress.
- Internet connection shall be provided with the ability for high internet speeds to be maintained and stable in nature with wi-fi coverage throughout all areas of the dwelling.

E	09.12.22	For Information	CK	BH
D	30.11.22	For Information	CK	BH
C	25.11.22	For Information	CK	BH
B	15.11.22	For Information	CK	BH
A	27.10.22	For review	CK	BH
Rev	Date	Description	Initial	CHK

Building A1, Midtown MacPark
 Ivanhoe Estate, Macquarie Park

Apartment Types Fitout Plans
 VERA Living Type A - Plan & RCP

Status	CD
Scale	As indicated @ B1
Drawn	Author Checked Checker
Project No.	S12067 A
Plot Date	9/12/2022 5:40:27 PM

Plot File	
Drawing no.	Revision
A13.A1.701	E

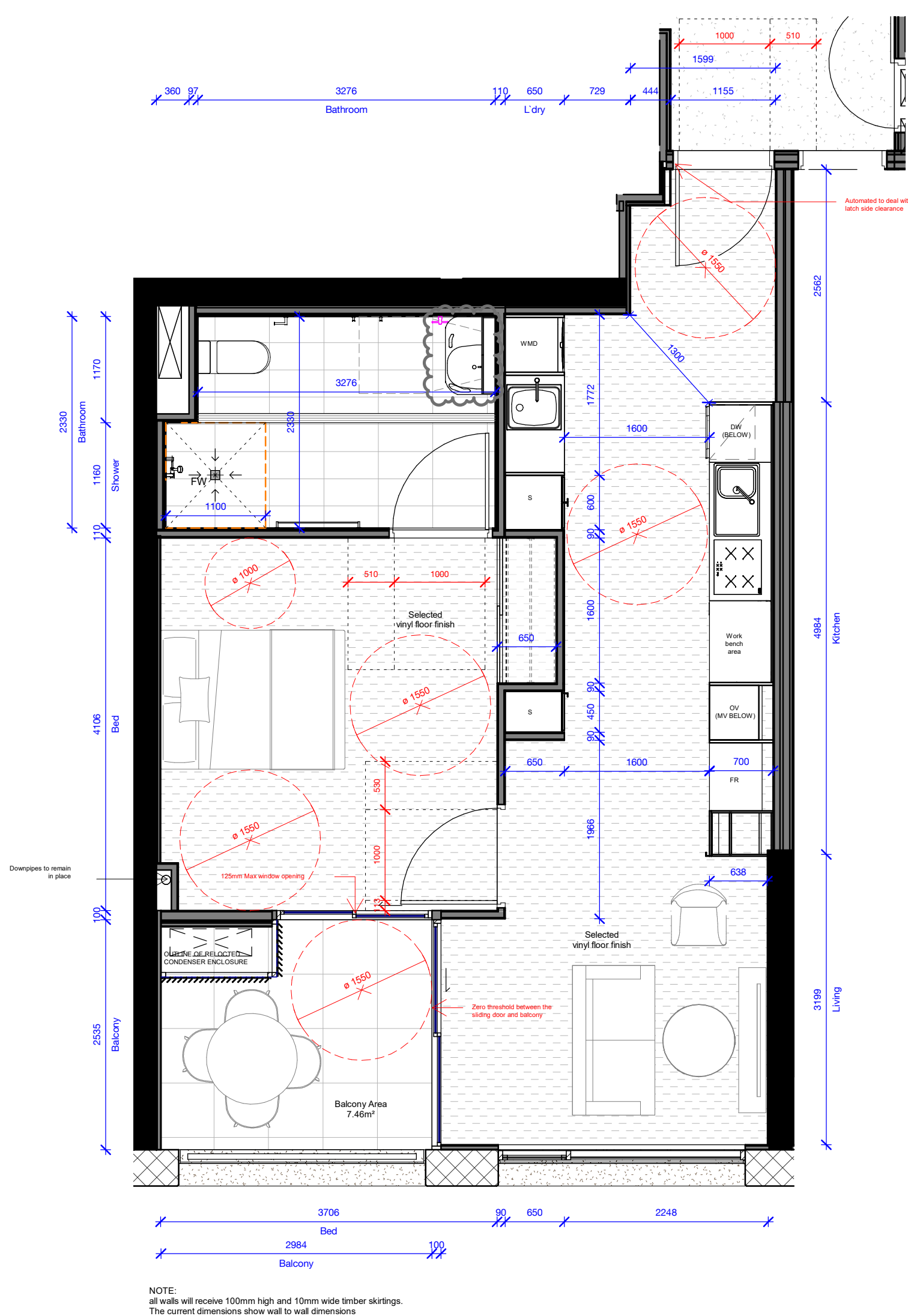
Melbourne 1 Nicholson Street
 Melbourne VIC 3000 Australia
 T 03 8664 6200 F 03 8664 6300
 email mel@batesmart.com.au
 http://www.batesmart.com.au

Sydney 43 Brisbane Street
 Surry Hills NSW 2010 Australia
 T 02 8354 5100 F 02 8554 5199
 email syd@batesmart.com.au
 http://www.batesmart.com.au

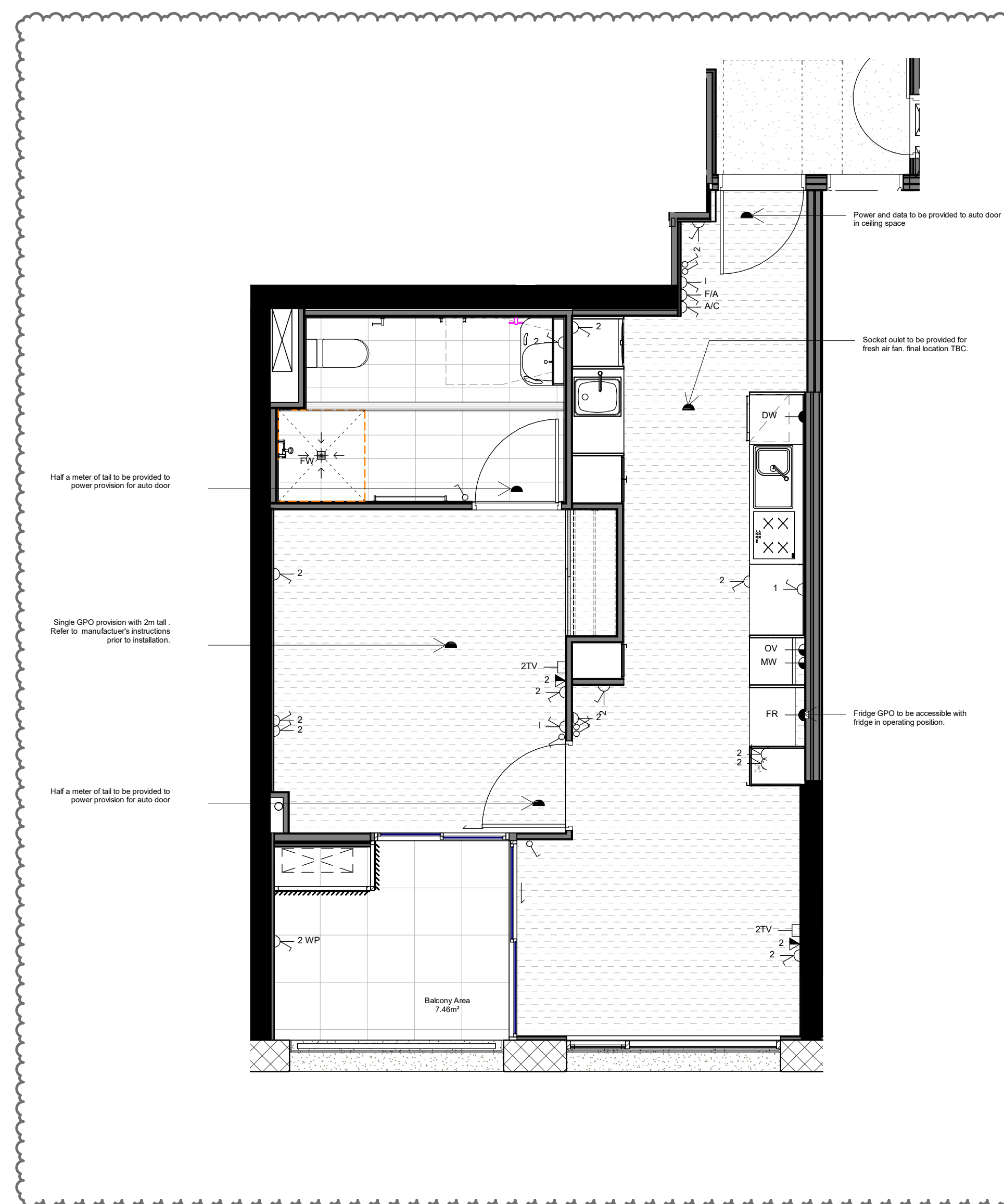
Bates Smart Pty Ltd ABN 70 004 999 400

FOR INFORMATION

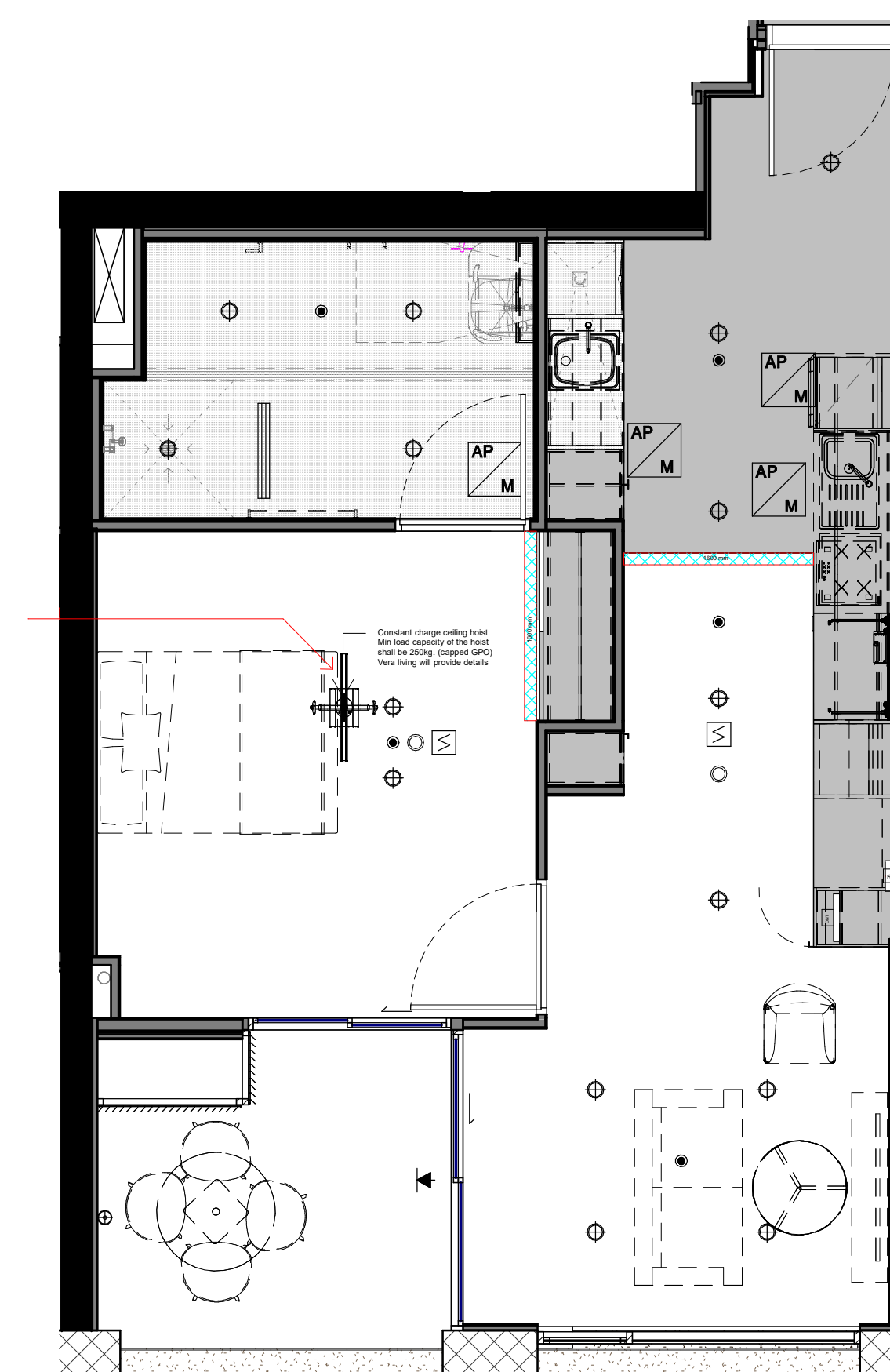
BATESSMART



1 VERA LIVING - Type-A 1:50



3 VERA LIVING - Type-A FINISHES + ELEC 1:50



2 VERA LIVING -U413 RCP 1:50